

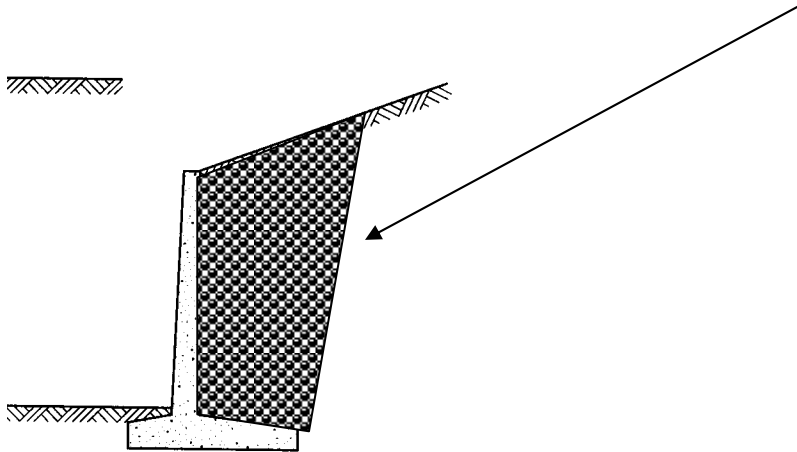


# Drainage behind concrete retaining walls

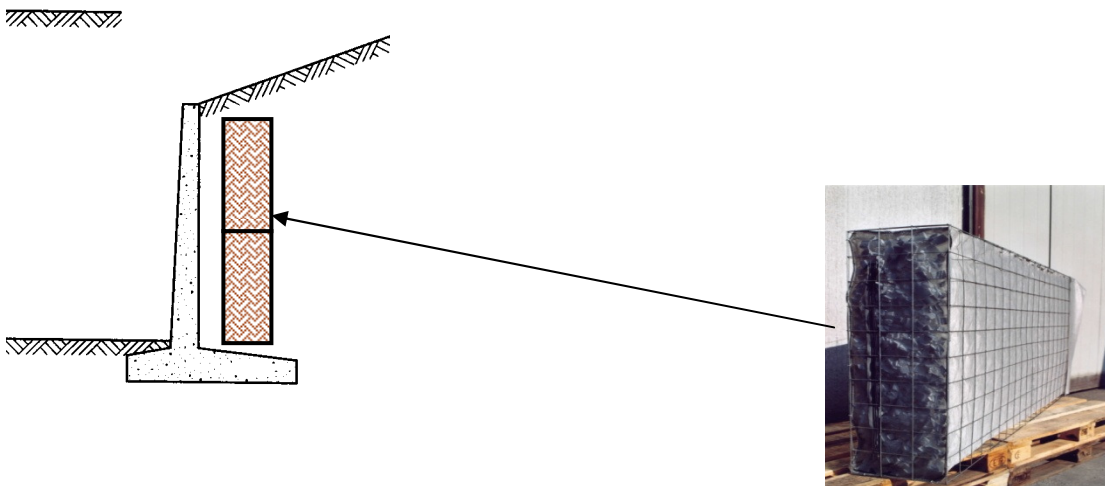
Retaining walls are structures able to reinforce and sustain natural/artificial slopes; this kind of structures need to be protected from the push due to the water contained in the ground .

Thanks to its particular shape and features the panel can work as an effective drainage system preventing the wall from the water push (as described in the following pictures).

Traditional way of draining water behind concrete walls (natural stones)



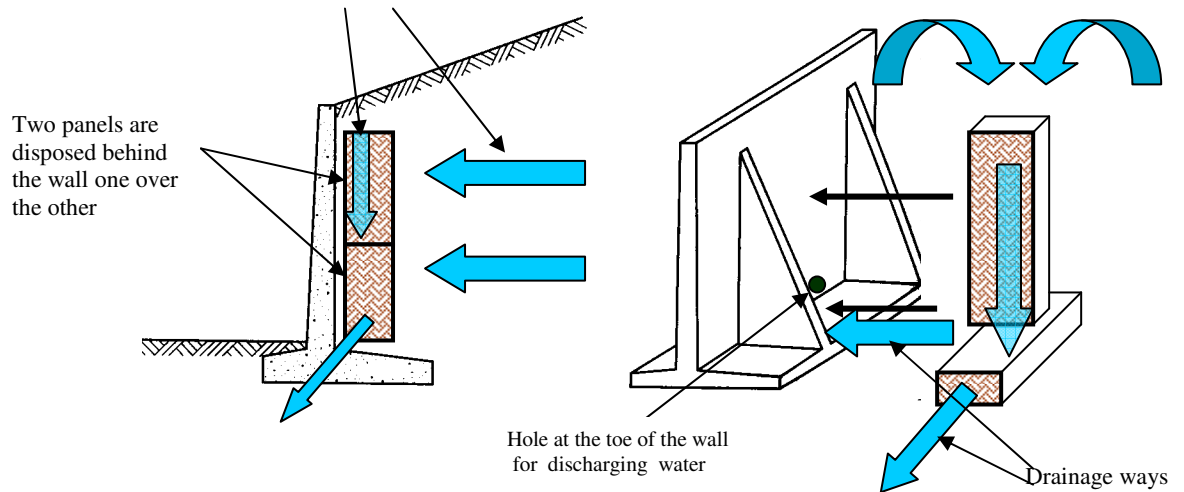
New way with draining panels filled with polystyrene “stones”



*Copyright IDROTER di Martinelli Francesco 2009  
All rights reserved*



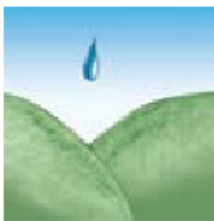
PARTICULAR CASE: Groundwater flows from the upper panels up to the lower panels, that collect and discharge water into the hole at the bottom of the wall



As you see in the section, 2 panels are installed behind a retaining wall one over other in order to obtain a “draining well” able to intercept water coming from slope and collect and discharge away.

Into the perspective picture, you see a particular case of a retaining wall with inner concrete reinforcement; in this case the drainage panels can be installed between 2 concrete reinforcement.

Water will be intercepted from the panels and discharged from the hole at the base of the wall.



Typical configuration of drainage of a retaining wall with synthetic draining panels

